

Autorun Configuration Note

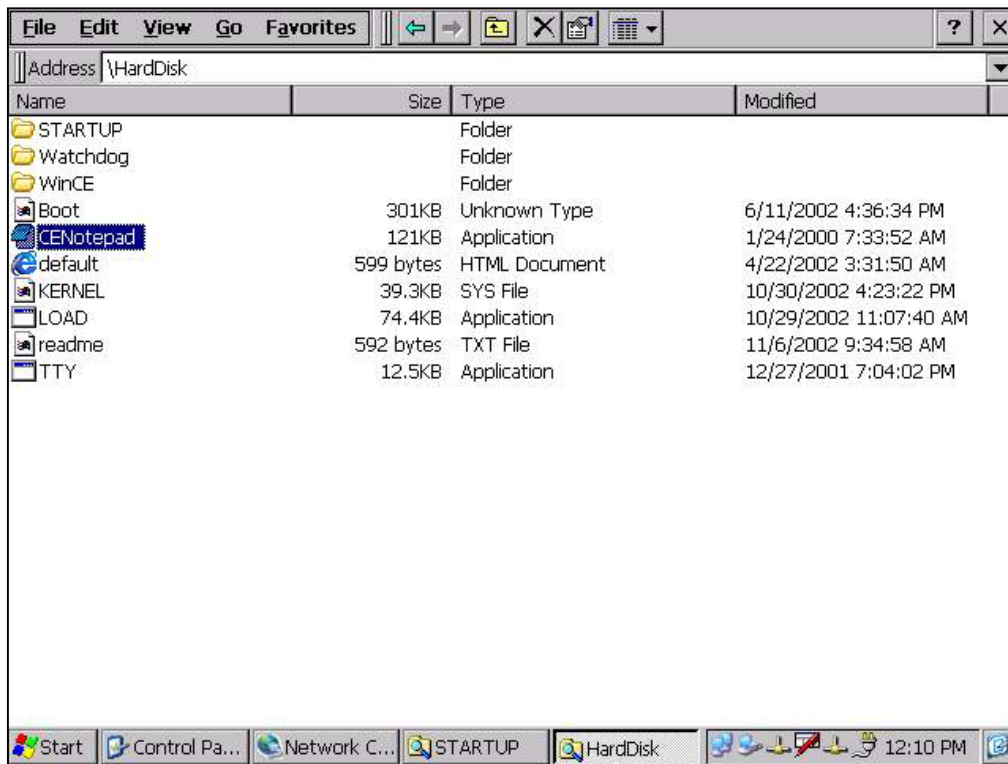
Introduction

This document introduces how to execute applications automatically when you boot UNO up.

Autorun Configuration Procedure

1. Execute **CENotepad** according below path:

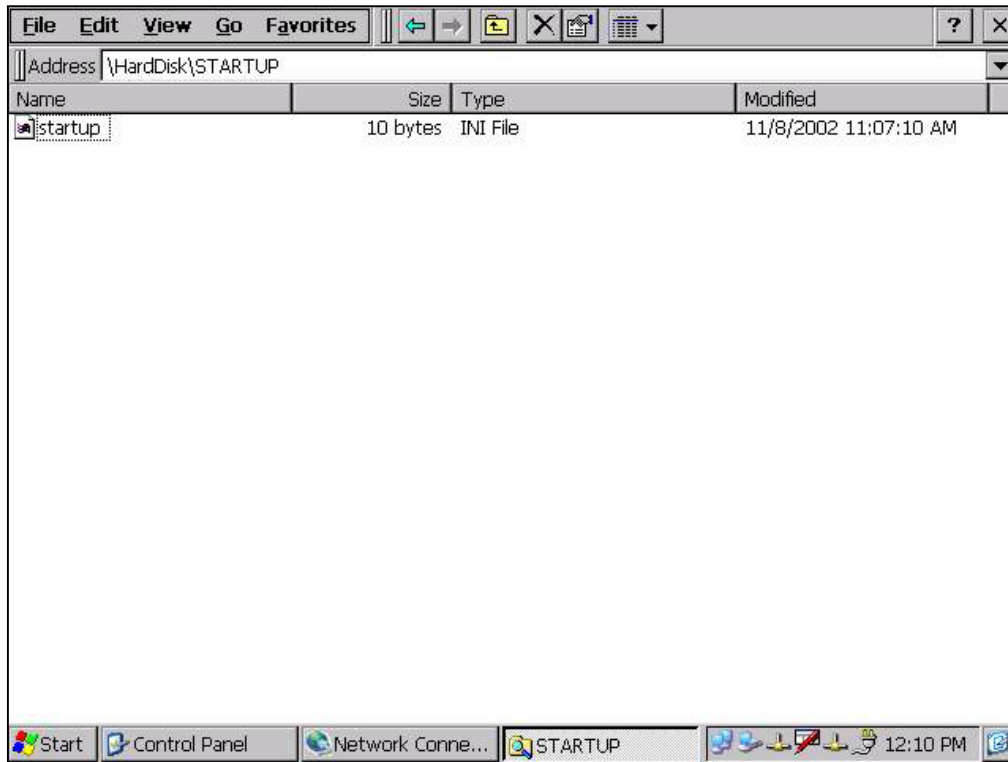
`\HardDisk\CENotePad.exe`



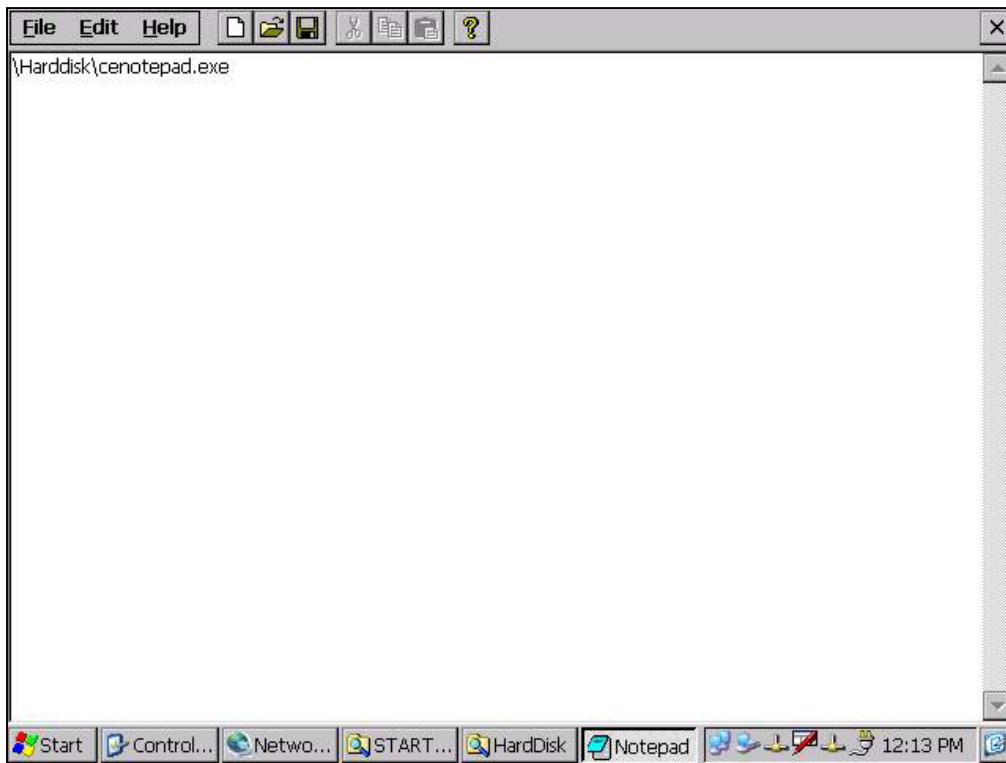
2. Select “**Start**” → “**Programs**” → “**Windows Explorer**”; select “**View**” → “**Option**” and choose “**Show all files**”.

3. Select “**File**” → “**Open**” to open the file **startup.bat** according to below path:

\HardDisk\STARTUP\startup.bat



4. Enter the application path that you want to execute when UNO boot up. For example, if you want to execute the application "CENotepad" when UNO boot up, you can enter its path in **startup.bat**.



5. After setting, you can restart UNO and it will execute the application (CENotepad) automatically.